

PROJECT PROFILE

MT CARLTON ENGINEERING AND COST OPTIMISATION STUDY

Client:	Conquest Mining Ltd.
CPS Project No:	10008
Country:	North Queensland.
Scope:	Gold-Silver-Copper Optimisation Study.
Total Project Value:	\$130 million (AUD)
Study value:	Approx \$500,000.00 (AUD)
Year Awarded:	2010
Status:	Completed



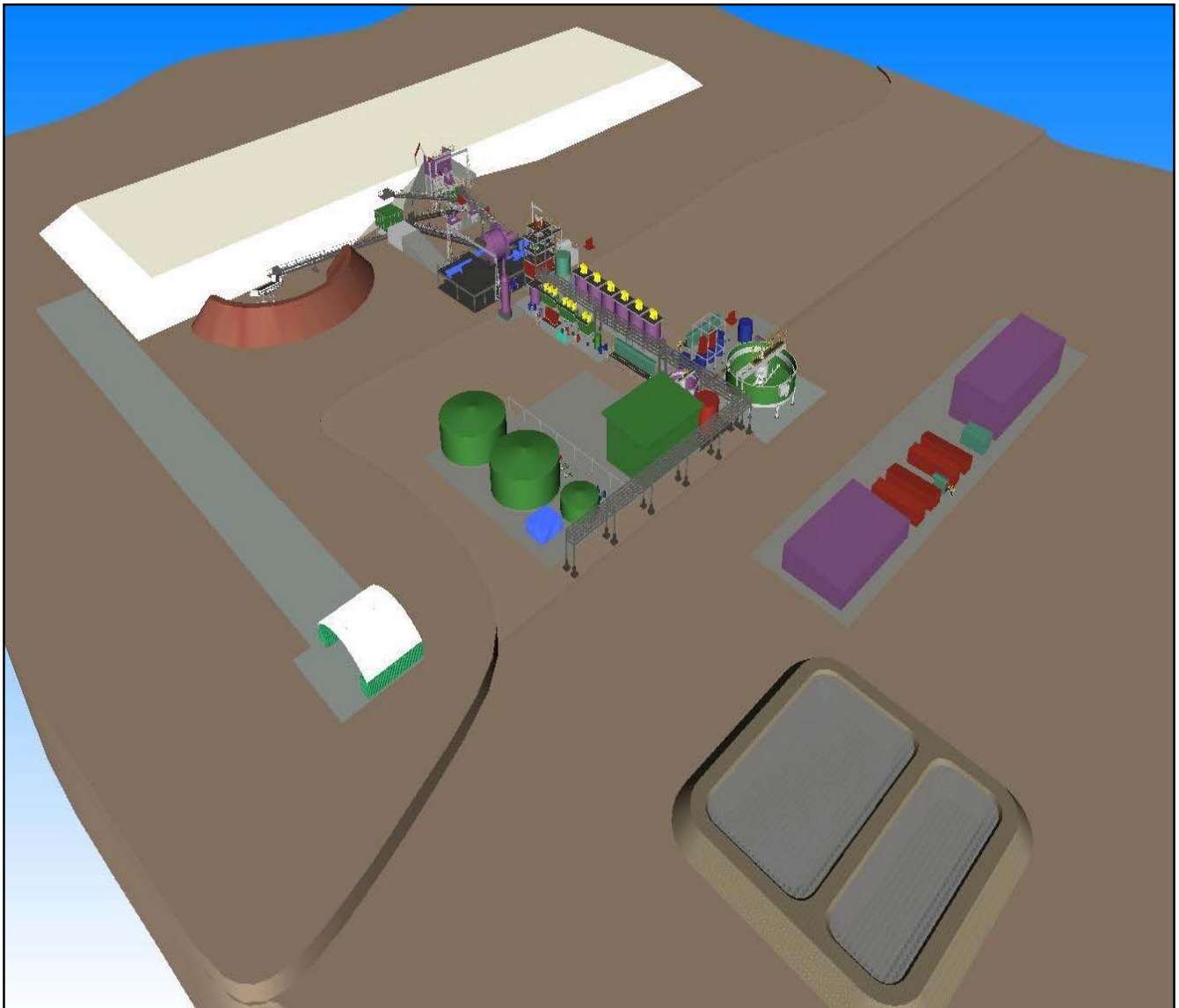
Project Description

Calder Project Services provided an engineered package suitable for Conquest Mining Ltd to progress to the implementation phase of the Mt Carlton Project with preparation of the following design desirables, anticipated to provide lower capital and operating costs and higher metal recoveries:

- Capital & operating cost estimate.
- Engineered process flow-sheets, P&ID's, Instrumented Flow Diagrams.
- Process design criteria.
- Plant and ancillaries layouts and general arrangement drawing in 3D model format.
- Equipment lists and data sheets suitable for pricing purposes.
- Electrical load summaries and data sheets.
- Electrical single line diagrams.
- Instrument summaries and data sheet.
- Process control philosophy.
- Preliminary engineering design for all areas within the Scope of Work.
- Bulk materials take-offs for all disciplines.
- Manpower schedules.
- Consumables summaries.
- Risk register including mitigating actions designed to reduce risk to level which are acceptable to Conquest.
- Project execution plan and high level and high level schedule, with emphasis on critical path items.



- Identify long lead items and increase details on equipment data sheets to facilitate firmer pricing so that orders for these items may be placed expeditiously.
- Spare parts lists and initial fill requirements.
- Draft form of contract for Implementation phase of the project.
- Engineering and cost study report including Executive Summary.



CALDER

PROJECTS SERVICES

www.calderprojects.com