

PROJECT PROFILE

COPPER 5TPD SX-EW ESTIMATE

Client: Redbank Copper Limited
Country: Northern Territory of Australia
Scope: SXEW Estimate
Total Estimate Value: \$5.4 million (AUD)
Year Awarded: 2009
Status: Completed



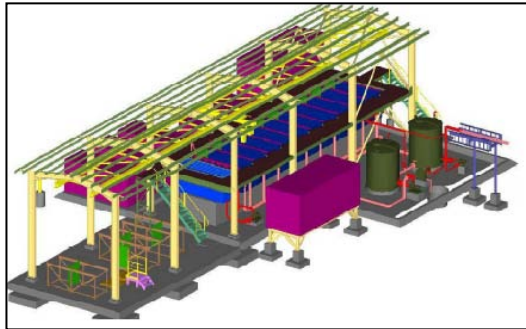
Project Description

Calder Projects Services developed a Capital Cost Estimate for Redbank Copper, detailing the costs involved, developing an SX-EW Copper Plant, based on similar Calder design to the Wetar Demonstration Plant.

The estimate provided a fully functional SX/EW plant within the defined battery limits. The estimate was for a plant which is simple, robust, no frills, fit for purpose facility with some manual functions such as cathode stripping and valve operations. An appropriate degree of automation and control was provided whilst maintaining simplicity.

The plant is designed to be suited to Australian mineral processing and weather conditions. The plant will be robust and have a minimum life of 7 years. Operations would be carried out year round. Operating hours would be 8,000 pa. Cathode production will be 5 tonnes per day.

Redbank Copper and Calder are currently in the final stages of negotiating a contract for Calder to design, construct and build a similar, yet larger plant, with an increased throughput.



CALDER
PROJECTS SERVICES

www.calderprojects.com